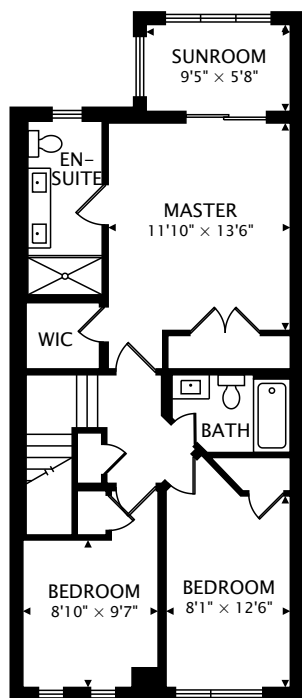
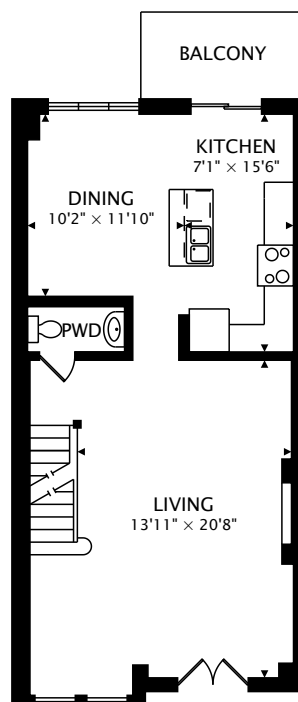


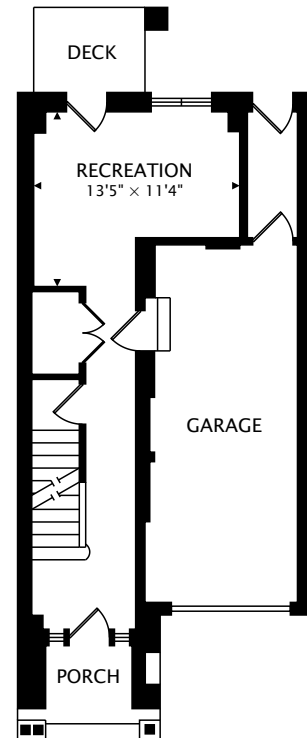
3038 HAINES ROAD #22
 MISSISSAUGA, ONTARIO L4Y 4B2



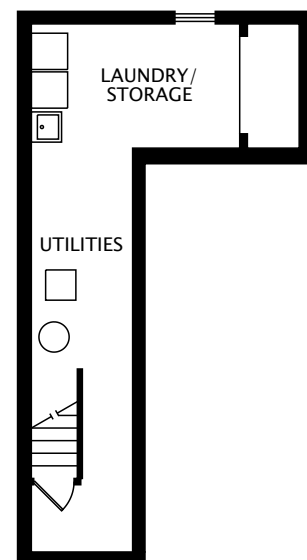
SECOND
 774 sq ft



MAIN
 716 sq ft



GROUND
 388 sq ft



LOWER
 357 sq ft BELOW GRADE

TOTAL
 1878 sq ft + 357 sq ft BELOW GRADE



CAPTURED ON: 5 AUG 2020
 DIMENSIONS, AREAS, LAYOUTS AND DETAILS ARE APPROXIMATE
 AND SHOULD BE CONSIDERED ILLUSTRATIVE ONLY.

Karly Moore
 Sales Representative
 Re/Max Realty Enterprises Inc., Brokerage
 D: 905-609-4848
 karly@lifewest.ca
<https://www.lifewest.ca/>