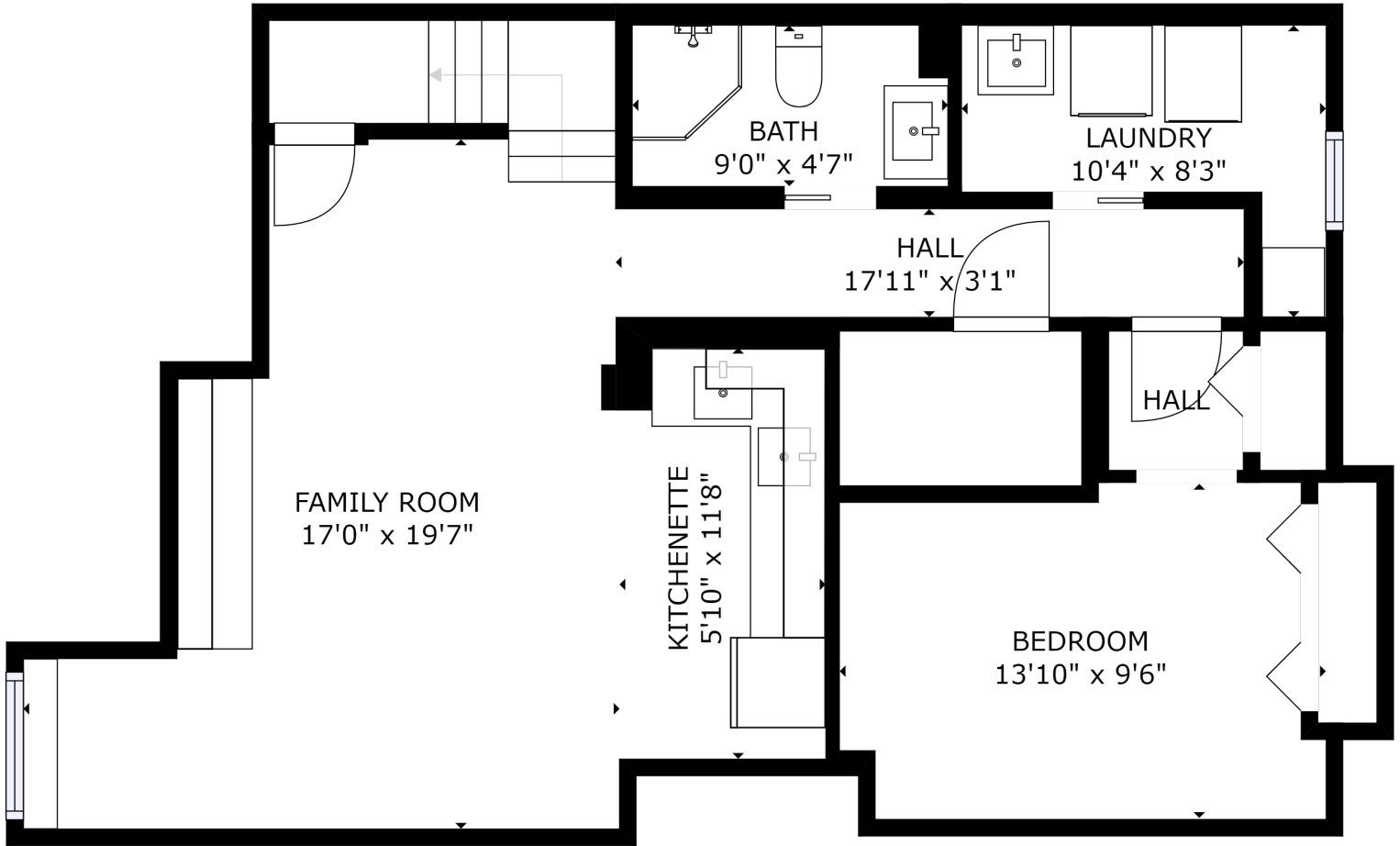


4590 Bay Villa Ave.
Mississauga , ON, L5M 4N6



FLOOR 1

GROSS INTERNAL AREA
FLOOR 1: 734 sq. ft, FLOOR 2: 810 sq. ft
FLOOR 3: 1024 sq. ft
TOTAL: 2568 sq. ft

SIZES AND DIMENSIONS ARE APPROXIMATE, ACTUAL MAY VARY

Karly Moore

Sales Representative

RE/MAX Realty Enterprises

Cell: 905-609-4848

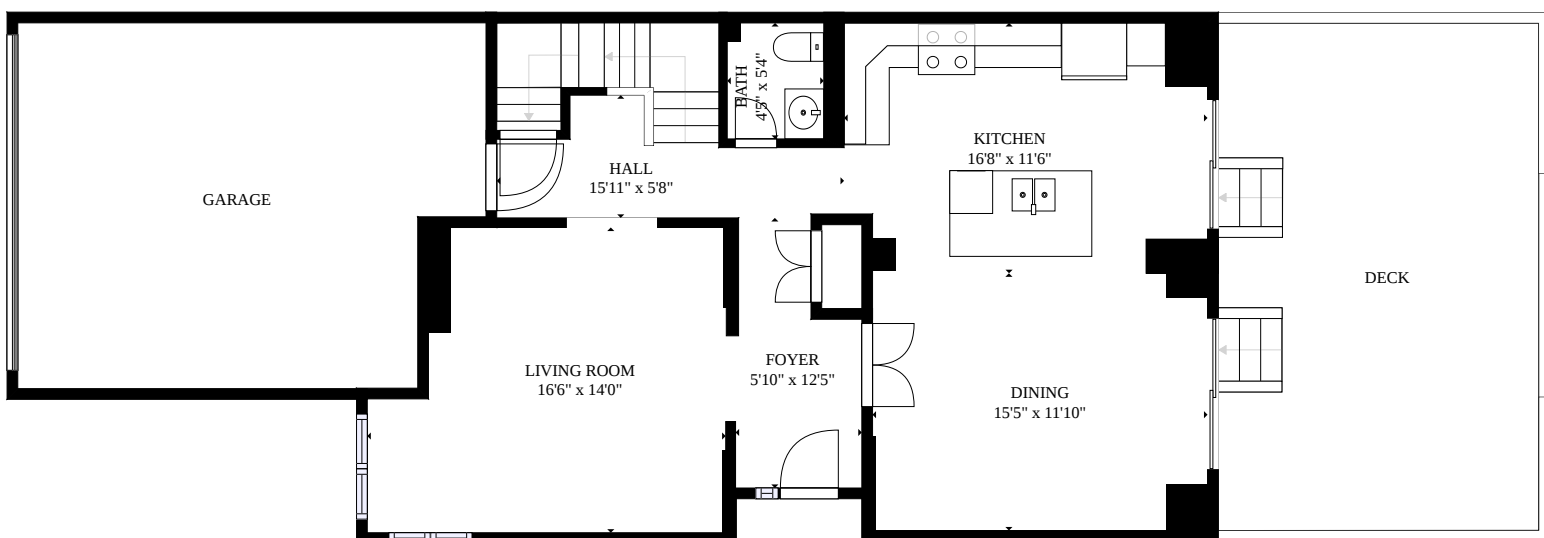
Office: 905-278-3500

Karly@LifeWest.ca

www.LifeWest.ca



4590 Bay Villa Ave. Mississauga , ON,L5M 4N6



FLOOR 2

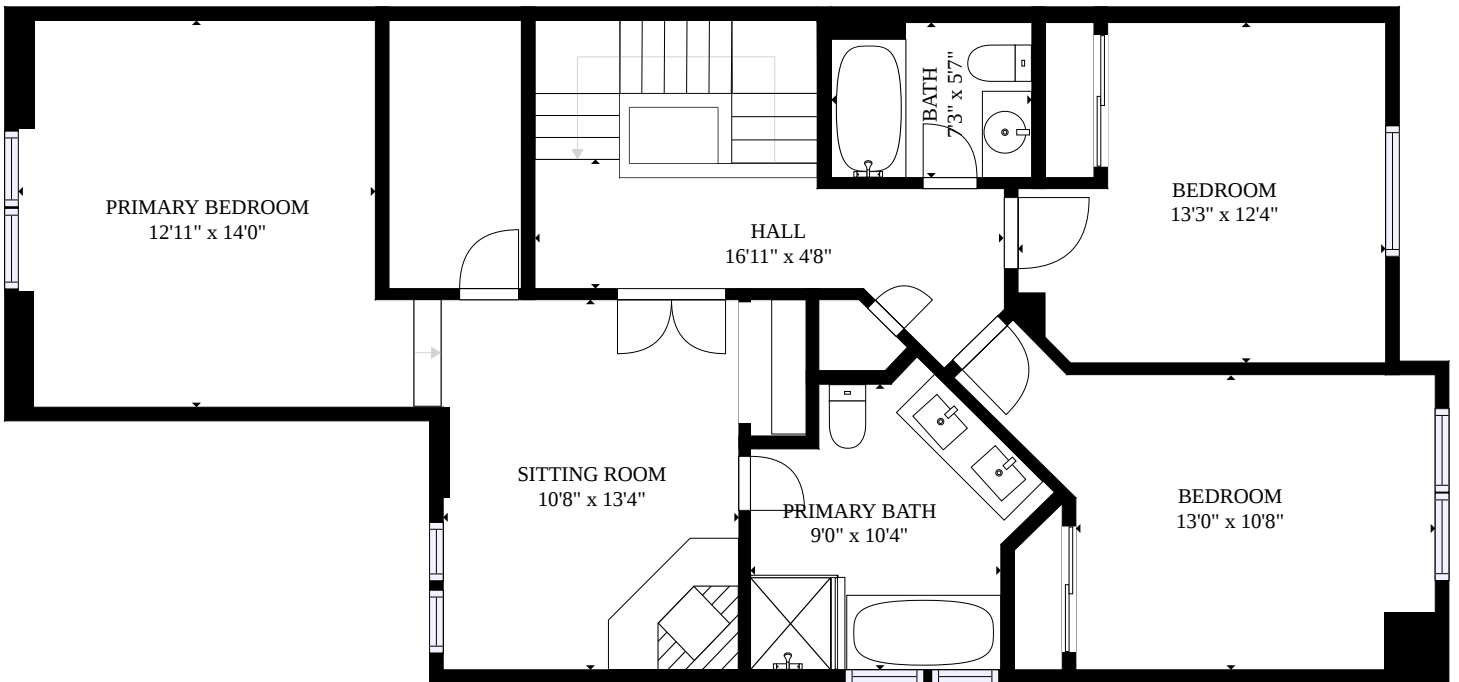
GROSS INTERNAL AREA
FLOOR 1: 734 sq. ft, FLOOR 2: 810 sq. ft
FLOOR 3: 1024 sq. ft
TOTAL: 2568 sq. ft

SIZES AND DIMENSIONS ARE APPROXIMATE, ACTUAL MAY VARY



Karly Moore
Sales Representative
RE/MAX Realty Enterprises
Cell: 905-609-4848
Office: 905-278-3500
Karly@LifeWest.ca
www.LifeWest.ca

4590 Bay Villa Ave.
Mississauga , ON, L5M 4N6



FLOOR 3

GROSS INTERNAL AREA
FLOOR 1: 734 sq. ft, FLOOR 2: 810 sq. ft
FLOOR 3: 1024 sq. ft
TOTAL: 2568 sq. ft

SIZES AND DIMENSIONS ARE APPROXIMATE, ACTUAL MAY VARY

Karly Moore

Sales Representative

RE/MAX Realty Enterprises

Cell: 905-609-4848

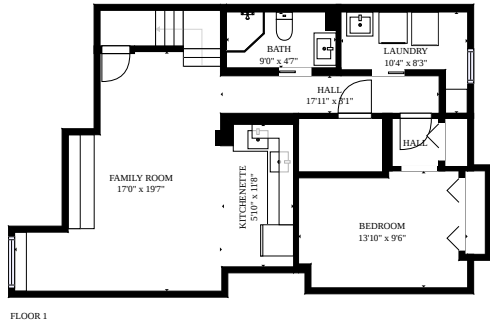
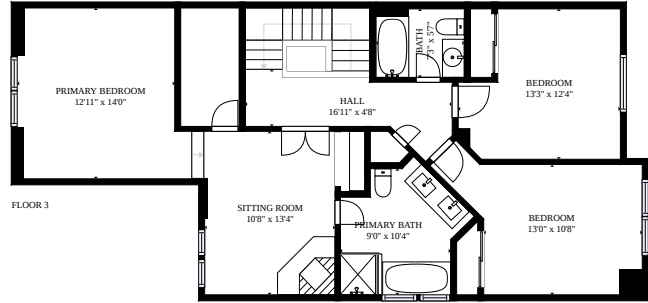
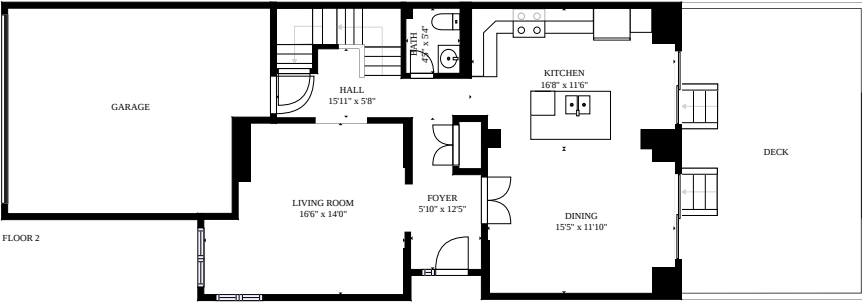
Office: 905-278-3500

Karly@LifeWest.ca

www.LifeWest.ca



4590 Bay Villa Ave. Mississauga , ON,L5M 4N6



FLOOR 3

GROSS INTERNAL AREA
FLOOR 1: 734 sq. ft, FLOOR 2: 810 sq. ft
FLOOR 3: 1024 sq. ft
TOTAL: 2568 sq. ft

SIZES AND DIMENSIONS ARE APPROXIMATE, ACTUAL MAY VARY



Karly Moore
Sales Representative
RE/MAX Realty Enterprises
Cell: 905-609-4848
Office: 905-278-3500
Karly@LifeWest.ca
www.LifeWest.ca