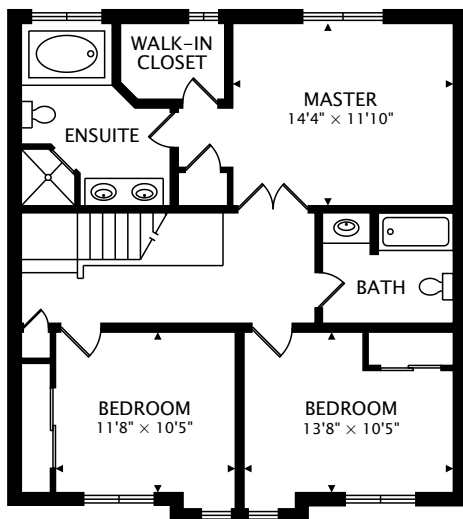
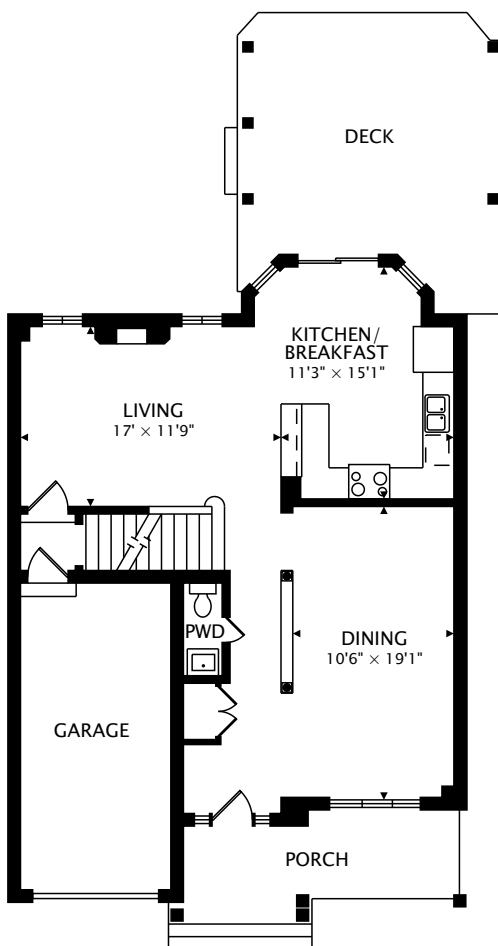


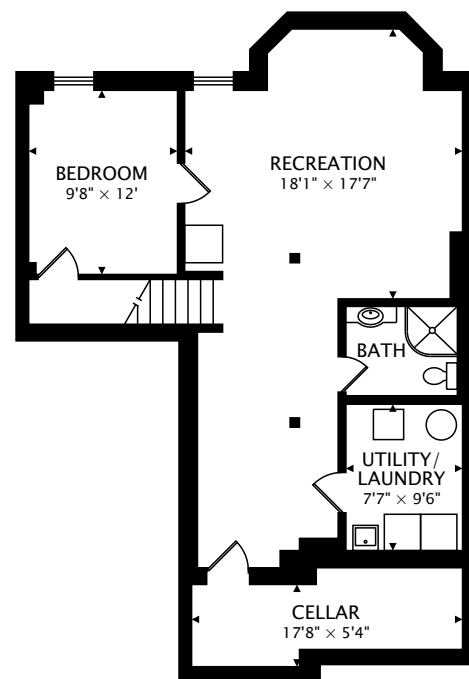
31 LIMERIDGE ST
 AURORA, ON L4G 7S5, CANADA



SECOND
 974 sq ft



MAIN
 860 sq ft



LOWER
 934 sq ft BELOW GRADE

TOTAL

1835 sq ft + 934 sq ft BELOW GRADE



CAPTURED ON: 28 MAR 2019
 DIMENSIONS, AREAS, LAYOUTS AND DETAILS ARE APPROXIMATE
 AND SHOULD BE CONSIDERED ILLUSTRATIVE ONLY.

Karly Moore
 Sales Representative
 Re/Max Realty Enterprises Inc., Brokerage
 D: 905-609-4848
 karly@lifewest.ca
<https://www.lifewest.ca/>